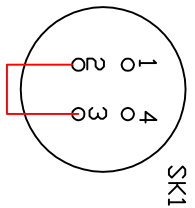
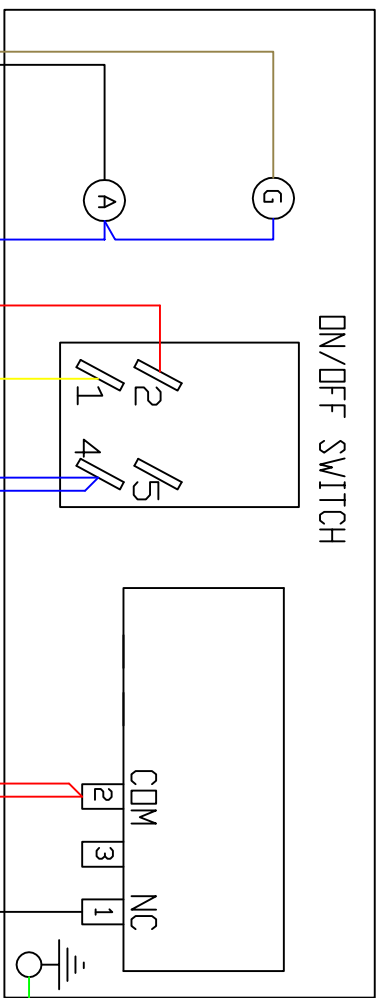


SK1 = FREE SOCKET  
TO BE FITTED TO  
PL1 AFTER WIRING

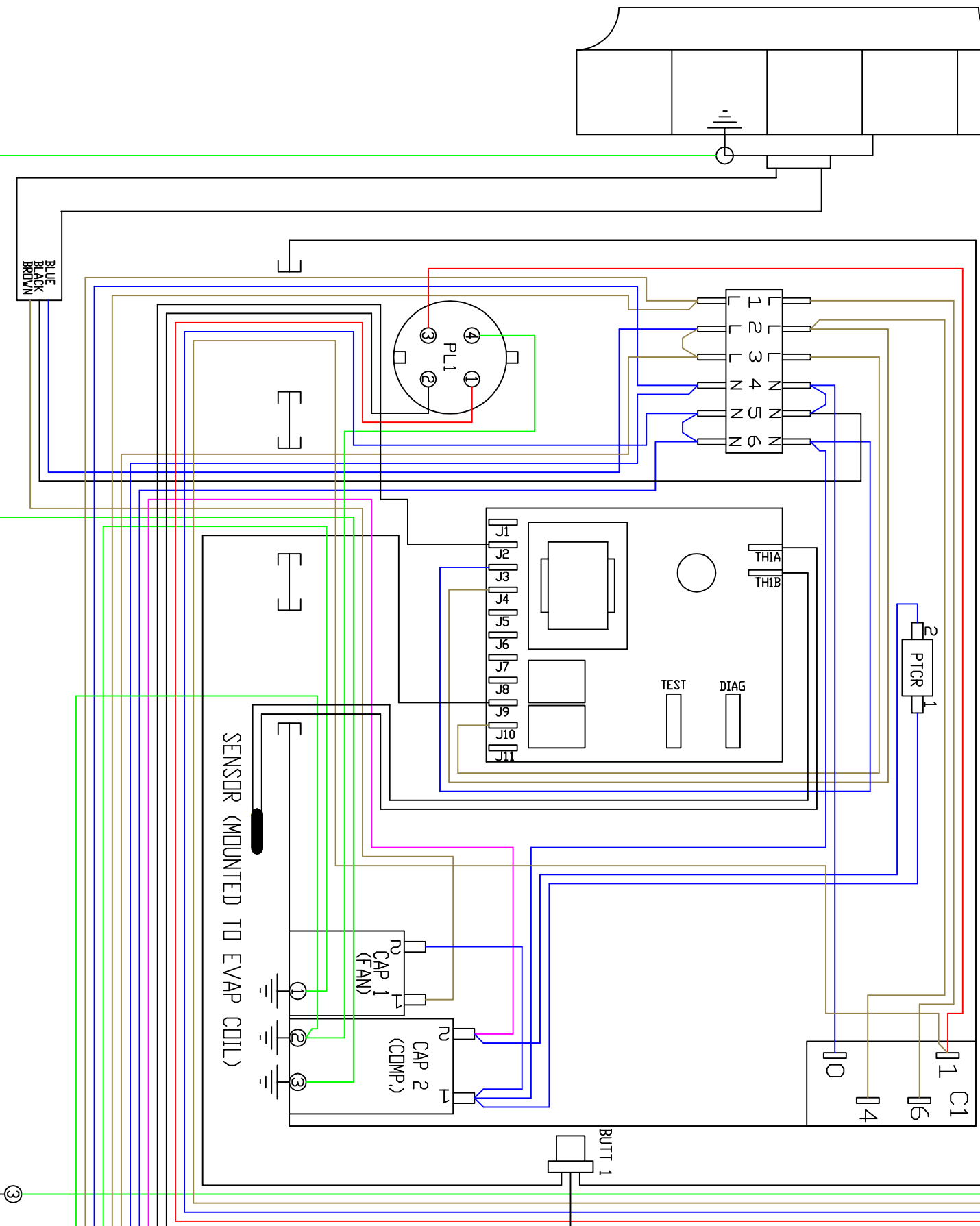
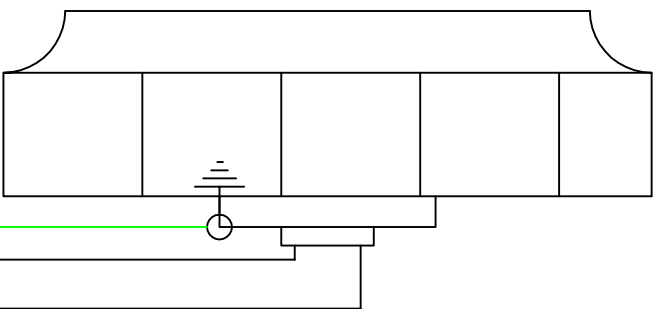


VIEWED FROM THE WIRING SIDE CONTROL PANEL

ON/OFF SWITCH



FAN MOTOR

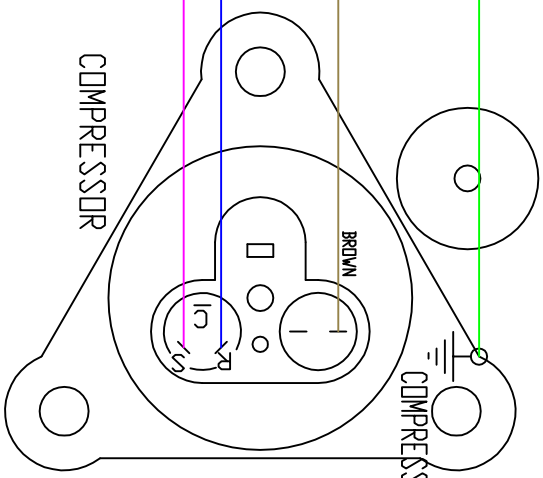


ISSUE	DATE	AMENDMENTS
2	21/11/08	WIRE COLOURS ADDED - WDA
3	27/02/09	RE-DRAWN TO REFLECT E BOX LAYOUT CHANGE - WDA
4	11/12/09	BUTT CONNECTOR ADDED / SK1 CORRECTED / J9 WIRE ADDED - WDA
5	19/02/10	HUMIDISTAT 1 - PL1-2 NOW BLACK / WAS RED - WDA
6	03/01/12	HSTAT / PTCR NOTATION ADDED - WDA
7	21/09/12	PUMP VIEW UPDATED - WDA
8	27/10/14	PUMP VIEW UPDATED - WDA

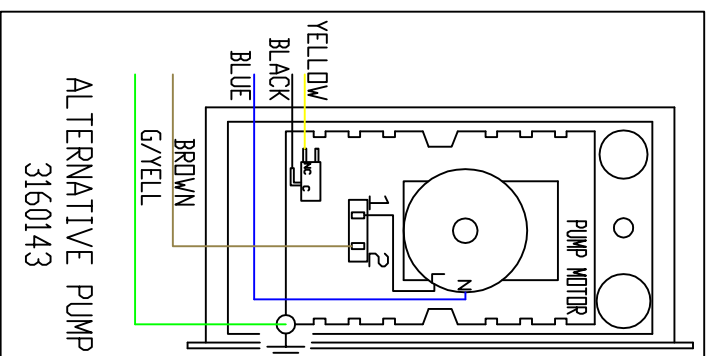
REVERSING VALVE

COMPRESSOR

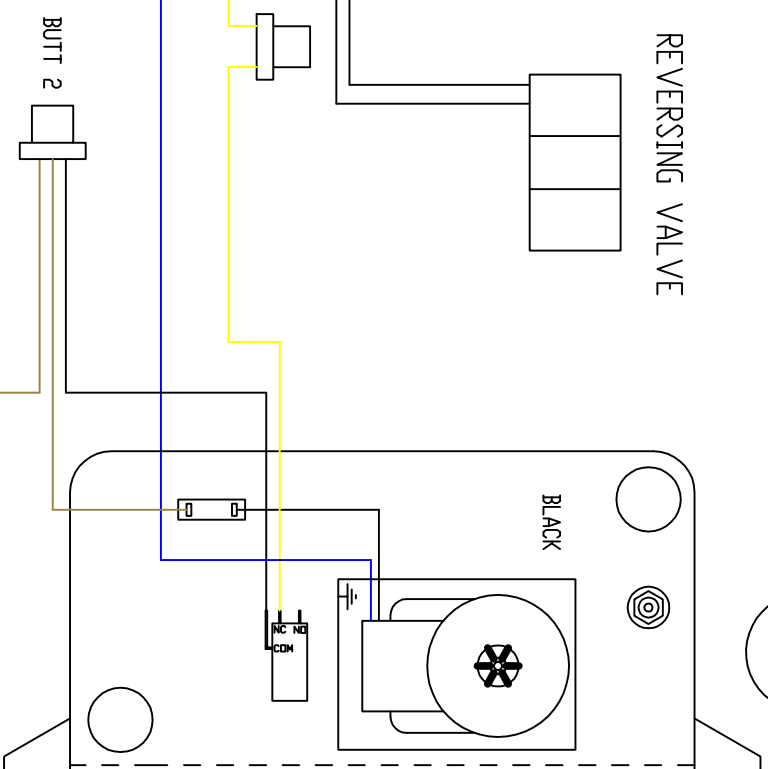
COMPRESSOR EARTH



ALTERNATIVE PUMP  
3160143



WATER PUMP



SENSOR (MOUNTED TO EVAP COIL)

**1993 EBOCC LIMITED**  
BISHOP AUCKLAND ENGLAND

**3RD ANGLE PROJECTION**  
DD NOT SCALE  
IF IN DOUBT ASK

**TITLE**  
WIRING DIAGRAM  
FREESTAR - USA 115V 60Hz

**MATERIAL**  
FINISH

**DIMENSIONS IN mm**  
TOLERANCES UNLESS OTHERWISE STATED  
0.0  
± 0.25  
± 0.05  
ANGULAR ± 0.5 DEGREE

**DRAWN : C LILLY**  
CAD SCALE : 1/1  
DRG.ND  
5010287

**NOTE**  
BLUE WIRE TO - SILVER SCREW  
G/YEL WIRE TO - GREEN SCREW  
BROWN WIRE TO - BRONZE SCREW