

Instant Comfort...Endless Savings

Featured on
Bob Vilas
Energy Wise House

SHOWER UNITS Residential and Commercial Use

Made In USA 

1/07

“SERIES TWO” Two Heating Modules

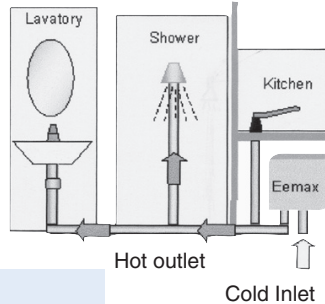
- Single shower water heater, cabin or condo, (range .7 to 3 GPM)
- Jetted bathtub booster 50 - 100 gallons - use T2 options

APPLICATIONS:

For use with several outlets
Staged turn on .7GPM. Max Flow 3GPM
Thermostatic control. Precise outlet temp (+/-1°)

Thermostatic

Model	Options	Volts	kW	Amps
EX95T	DR	240V	9.5kW	40A
EX120	T2,TC,DR	240V	11.5kW	48A
EX144	T2,TC,DR	240V	15kW	64(2x32)A
EX190	T2,TC,DR	240V	19kW	80(2x40)A
EX1608	T2,TC,DR	208V	16.6kW	80(2x40)A



EX (TC,DR)

OPTIONS

- TC - twin thermostats cold or hot water feed, staged, .7 GPM turn on 3, GPM max
- T2 - twin thermostats cold or hot water feed, parallel, 1.5 GPM turn on, 4 GPM max
- DR - external temperature control, LED temperature display, see “DR” spec sheet

*can be used at 208 volts 25% reduced output
Also available in 277 volts single phase (16,20kW)

“SERIES THREE” Three Heating Modules

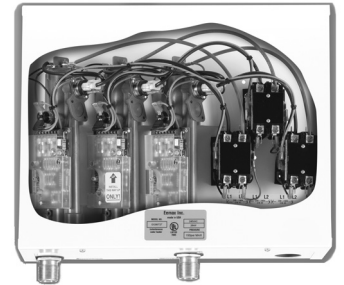
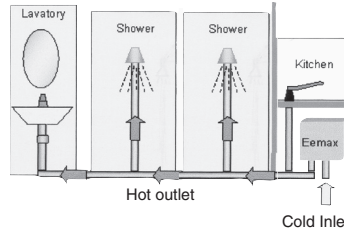
- Whole house, multi fixture, 4 GPM
- Jetted bathtub booster 50 - 100 gallons - use T3 option

APPLICATIONS:

Whole house unit has capacity to handle up to two showers at a time.
Staged turn on .7GPM. Max flow 4GPM
Thermostatic control. Precise outlet temp (+/-1°)

Model	Options	Volts	kW	Amps
EX280	T2T,T3,DR	240V*	28kW	120(3x40)A

- Engineered to turn on in stages. Uses only needed energy for amount of flow required.
- Sophisticated thermostat delivers precise outlet temperature.



EX (T2T,DR)

OPTIONS

- T2T - hot or cold water feed, staged turn on, .7 GPM turn on, max 4 GPM
- T3 - Parallel activation, 1.8 GPM turn on, 5 GPM max, hot or cold feed
- DR - External Temperature Control, LED temperature display, see “DR” spec sheet

*can be used at 208 volts 25% reduced output
Three Phase also available in 480/277 volts star (18,24,32kW) or 120/208 volts delta (18,24kW)

“SERIES FOUR” Four Heating Modules

- Whole house, multi fixture, 6 GPM max

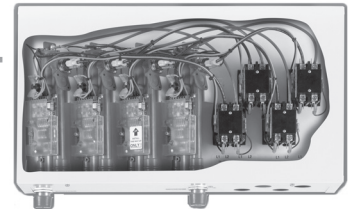
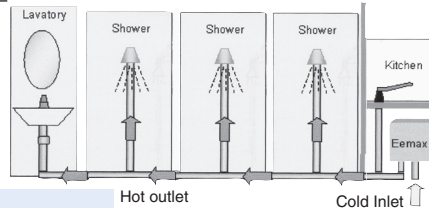
APPLICATIONS:

Whole house unit has capacity to handle up to three showers at a time.
Staged turn on 1GPM to max flow 6GPM
Thermostatic control. Precise outlet temp (+/-1°)

Model	Options	Volts	kW	Amps
EX380	T2T2,T3,DR	240V	38kW	160(4x40)A

OPTIONS

- T2T2 - hot or cold water feed, staged turn on, .7 GPM turn on, 6 GPM max
- T3 - Parallel activation, 1.8 GPM turn on,



QUALITY FEATURES

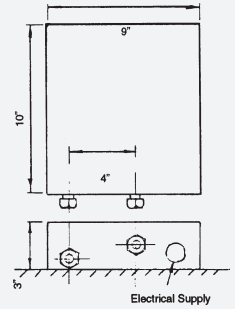
- **99% efficiency rating**
- **Cuts energy waste:** No stand-by heat loss. Heats only when needed.
- **Low Installation cost:** Requires only one cold water input line. no solder connections. Mounts on wall.
- **Designed for durability:** Reduces calcification and sedimentation.
- **Thermostatic control:** microprocessor provides precise outlet temperatures
- **Regulates power to required flow.**
- No T&P, drain pans, thermal expansion valves (check local codes)
- **Endless Hot Water**
- **Five year warranty on heater body. One year on parts.**
- **Replaceable cartridge element. (one year unconditional warranty)**
- **High Temperature Limit Switch** - protects against element burn out, with reset button
- **LEED Certified**



SPECIFICATIONS

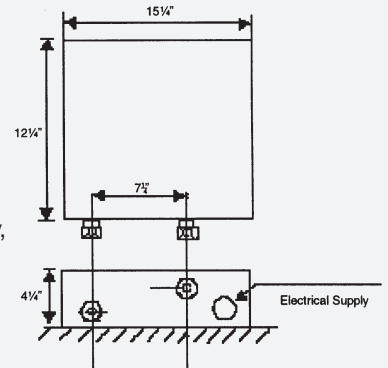
“SERIES TWO” (Two Heating Modules) (EX120TC/EX144TC/EX190TC)

Dimensions: 10"x9"x3"
 Weight: 8 lbs
 Operating Pressure: 25 min PSI, 150 max PSI
 Cover: Enameled Steel
 2 Glass reinforced Heater Bodies
 and Ni Chrome elements
 Color: White
 Element: Dual replacement cartridge inserts
 Microprocessing temp control (+/-1°) accuracy,
 adjustable range 100° - 140°F
 Pipe Fitting: 3/4 npt at bottom of unit (5/8" OD)
 UL listed: E86887(M)
 US Patent #'s: 4,960,976 and 4,762,980



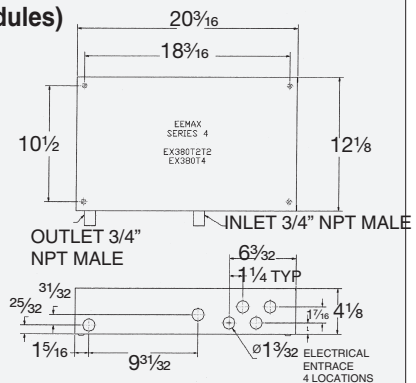
“SERIES THREE” (Three Heating Modules) (EX 280T2)

Dimensions: 15 1/4" x 12 1/4" x 4 1/4"
 Weight: 12 lbs
 Operating Pressure: min 45 PSI, max 150 PSI
 Cover: Enameled Steel
 3 Glass Reinforced Heater Bodies
 and Ni Chrome elements
 Color: White
 Element: Triple replaceable cartridge inserts
 Microprocessing temp control (+/-1°) accuracy,
 adjustable range 100° - 140°F
 Pipe Fitting: 3/4 npt at bottom
 of unit. (5/8" OD) or 3/4" NPT Adapter EX178)
 UL listed: E86887(M)
 US Patent #'s: 4,762,980 and 4,960,976



“SERIES FOUR” (Four Heating Modules)

Dimensions: 20 3/16 x 12 1/8 x 4 1/8
 Weight: 23 lbs
 Operating Pressure: 45 psi, max 150 psi
 Cover: Enameled Steel
 4 Glass Reinforced Heater Bodies
 and Ni Chrome elements
 Color: White
 Element: Four replaceable cartridge inserts
 Microprocessing temp control (+/-1°) accuracy,
 adjustable range 100° - 140°F
 Pipe Fitting: 3/4 npt
 UL listed: E86887(M)
 US Patent #'s:



THE ADVANTAGE OF EEMAX TANKLESS ELECTRIC WATER HEATERS.

Because flow activates Eemax's powerful heating elements there is no wasted energy. Eemax's sophisticated thermostatic control and staged heating modules give you precise temperature and flow meeting all your hot water needs.

- Never run out of hot water again
- Saves Energy
- Saves Space
- Reduces material and installation cost
- Rugged Construction:
5 year warranty on heater body
One year parts, including replaceable cartridge element

Typical Flow Rates in Gallons per Minute (gpm)

Fixture Type	Lavatory	Bathtub	Shower	Kitchen Sink	Pantry Sink	Laundry Sink	Dish-washer
Flow Rates	.5	2.0 - 4.0	1.5 - 3.0	1.0 - 1.5	1.5 - 2.5	2.5 - 3.0	1.0 - 3.0

Target outlet temperature 105°/110° for bathing.
 Average incoming temperature 55°.

RATINGS

MODEL	THERMOSTATIC OPTIONS	VOLTS	kW RATING	AMPS	TEMPERATURE RISE °F							Recommended Wire Size
					1.0 GPM	2.0 GPM	2.5 GPM	3.0 GPM	4.0 GPM	5.0 GPM	6.0 GPM	
EX95T	DR	240V	9.5kW	40A	65°	32°	26°	21°	16°	—	—	8 AWG
EX120	TC,T2,DR	240V	11.5kW	48A	79°	39°	31°	26°	19°	—	—	6 AWG
EX144	TC,T2,DR	240V	15.0kW	(2x32A) 64 ⁺	102°	51°	38°	34°	26°	—	—	8AWG per module
EX190	TC,T2,DR	240V	19.0kW	(2x40A) 80 ⁺	130°	65°	52°	43°	32°	—	—	8AWG per module
EX1608	TC,T2,DR	208V	16.6kW	(2x40A) 80 ⁺	113°	55°	45°	38°	28°	—	—	8AWG per module
EX280	T2T,T3,DR	240V	28.5kW	(3x40A) 120 ⁺	—	96°	76°	65°	47°	—	—	8AWG per module
EX380	T2T2,DR	240V	38kW	160(4x40A)	129.8°	129.8°	103.8°	86.5°	64.9°	51.9°	43.3°	8AWG per module

*Units can be used on 208V with 25% reduced output.

+This unit must have independent electrical circuits using correctly rated wire and circuit breakers.

SPEC OPTIONS:

- SERIES TWO**
- TC = twin thermostats cold or hot water feed, staged
 - T = twin thermostats cold or hot water feed, parallel
- SERIES THREE**
- T2T = Hot or cold Feed staged turn on min. .7 GPM, max 4 GPM
 - T3 = Parallel activation 1.8 GPM turn on, 5 GPM max, hot or cold feed
- SERIES FOUR**
- T2T2 = Hot or cold Feed staged turn on min. .7 GPM, max 6 GPM
 - DR = External Temp. control LED readout, see "DR" spec sheet



UL
LISTED

MADE IN USA

Eemax® Inc.
353 Christian St., Oxford, CT 06478

www.eemax.com

Telephone: (203) 267-7890
 Toll Free: 1-800-543-6163
 Fax: (203) 267-7975